



Cancer Assistance  
PROGRAM

Help when you really need it.

# CAP ANNUAL REPORT 2020





# 2020: A Year Like No Other

## DEBBIE LOGEL BUTLER

Executive Director

As we look back at the year 2020, we do so with mixed emotions and disbelief. A worldwide pandemic causing fear, isolation, and loss while at the same time bringing tremendous feelings of gratitude, kindness, and appreciation for good health.

On March 16th, we made the decision to close our doors in order to keep our clients, volunteers and staff safe. However, we did not stop our services as cancer did not stop. Our equipment loan program continued as it was imperative that cancer patients could remain at home safely.

A new Drive-to-Deliver program was launched where our volunteer drivers delivered incontinence products, nutrition (Ensure) and a Zarky's Fine Foods grocery bag to our client's doorsteps with no physical contact.

Our Drive & Ride program was temporarily halted, but thanks to a 2-year grant we were able to lease a new van to increase physical distancing as well as fund the installation of protective shields in our driver's vehicles. With Covid protocols in place, we were able to safely resume drives in a limited capacity for our clients.

While many other charities cancelled or postponed their fundraising events, CAP forged ahead to ensure these essential events could carry on in new and creative ways. The annual CARE Walk and Gala adapted very well to the virtual format and our annual Golf Classic tournament was modified with limited golfers. All signature events were a success, meeting revised targets.

This year more than ever, I owe a deep debt of gratitude to the small but mighty group of CAP volunteers who stepped up. Their commitment to serve, embrace new ideas, and to do things differently never faltered. Instead, these new ways of doing our traditional work were met with **"how can I help?"**

We were amazed at the generosity of our current donors who increased their gifts, the many donors who continually support our events and those who made gifts for the first time. To our federal, provincial, and municipal funders, **Thank You!** The funds to assist with wages, rent, PPE, and services made it possible for us to reimagine and continue delivering our core services.

We were so fortunate that the Cancer Assist Show podcast launched in March. Thanks to funding from the Hutton Family Fund and our host Dr. Bill Evans, we were able to virtually launch timely and relevant topics for cancer listeners across Canada and the USA.

The Board of Directors, under the leadership of new president Michael Ecker, spent countless hours meeting by Zoom as they continued to govern and support the new pandemic initiatives. Your support and encouragement during this past year in my leadership and that of the CAP team was truly appreciated and I thank you.

To Jim Foreman, Ashlee Leggett, Maria Rowley, Lou Cino, Wendy Kizlyk, Dusty Vacon, Janice Shearer and Sandy Schweyer who embraced the "new normal" and continued to meet deadlines and achieve and exceed targets while working from home and in the office... your dedication was truly amazing, and I am so thankful to work with each of you every day.

This annual report will share some amazing results and feature a group of true philanthropists who without hesitation joined in our efforts to continue to serve despite a global pandemic. 2021 may look and feel like 2020 in many ways but with one great difference – **HOPE**. With the emergence of the vaccine, our world is expected to return to pre-Covid days. For the one in two members of our community who will receive a cancer diagnosis, know we will be here to offer **"help when you really need it."**

### 2020 Staff Team

**Debbie Logel Butler**  
Executive Director

**Ashlee Leggett**  
Manager, Fund Development

**Lou Cino**  
Finance Manager

**Jim Foreman**  
Equipment Technician

**Maria Rowley**  
Volunteer & Client Services  
Coordinator

**Wendy Kizlyk**  
Administrative Coordinator  
(Retired June 2020)

**Dusty Vacon**  
Adminstration &  
Development Coordinator  
(Started June 2020)



# A Message of Gratitude

## MICHAEL ECKER

Board President

It is hard to believe that we have crossed one year of this pandemic. It was the thought that if we could just shut down for two weeks, we would be beyond this. While it has not quite worked out that way, we have adapted and found out things about ourselves. Some things we like, and others not so much. This is true for charities as well. We have found that some of our systems did not translate well to the new normal. We have streamlined our technology to contact our clients in a more efficient manner. We have adapted the programs that we deliver and added programs to complement what we are already offering such as the Drive-to-Deliver program.

When people ask me why I am involved with the Cancer Assistance Program, I simply say that I like being involved in a local charity that is doing good for the people in my community. Now that one year of the pandemic has passed, I have reflected on what it means to be **grateful**. As Board President, I have witnessed what gratitude truly means. I have seen it in our volunteers, our staff, our Board members, our donors, and most importantly our clients.

We truly could not do what we do without our volunteers! It starts when clients wish to register with CAP for the first time. Our volunteers are the first people they interact with; the welcoming and compassionate team always ready to be of assistance. We have heard time and again of the impact our volunteers have on the client experience. I am confident that our volunteers share my feeling of gratitude in their support and service to our many clients and find it to be a rewarding experience.

Passion and commitment to clients and the Cancer Assistance Program is the focus of our amazing staff. There is a lot to be done behind the scenes, and their attention to detail ensures that our programs and services run smoothly. I am confident that our staff are grateful to serve our clients and share my pride

in being part of such an exceptional and accessible charitable organization.

As a Board, we are grateful that we can volunteer with such a great organization and are playing a small part in ensuring the sustainability of CAP.

No charity can survive without its donors. Our many donors show great commitment and are there when we need them. When we had to pivot this past year and offer new services, it was our individual, corporate and government donors who stepped up to assist us in continuing to serve clients in a positive and caring way. I am certain that our donors are grateful and proud to be able to assist our clients. There is no shortage of worthwhile charities to support municipally, provincially or nationally. It is extremely rewarding to see how your donations have made a significant impact in our local community.

Of course, no charity is anything without the clients that are being served. From the numerous thank you's and the positive comments that we receive from the community, our clients and their families have shown their gratitude for the services that we have been privileged to provide.

This year has been full of trying times and great limitations in all our lives. **We all have a lot to be grateful for.**

As an organization, a community or as a personal commitment, we are fortunate to be **helping people when they really need it.**



### 2020 Board of Directors

**Lisa Owens**  
Past President

**Michael Ecker**  
President

**Ray Hutton**  
Vice President

**Joanne Battaglia**  
Secretary/Treasurer

**Narciso Bomben**

**Don Burroughs**

**Dr. Bill Evans**

**Krista Kay**

**Jeff Nayler**

**Stan Tick**

**Bruno Uggenti**

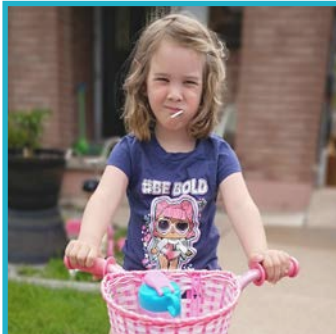
# 2020

## Year in Review

1



3



5



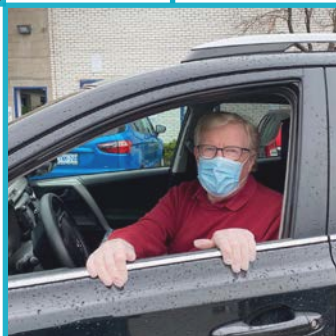
7



9



2



4



6



8



10

### HIGHLIGHTS

#### 1. Third Party Fundraiser, Greenhorizons Sod Farms & BigYellowBag ~ March through June 2020

Staff members Dusty Vacon and Ashlee Leggett accept a cheque for a donation of \$2,280 – 228 bags of soil and/or mulch purchased using our special promo code!

#### 2. T. Lloyd Electric Donation of Energy Efficient Lighting ~ Saturday, March 7th, 2020

We are so thankful for T. Lloyd Electric who donated their time and expertise to replace our outdated light fixtures. Joining the Lloyds in this wonderful gift were Robertson Electrical, who donated all the LED lights, and Claire's Drywall, who donated the ceiling tiles. The gift that keeps on giving!

#### 3. Launch of the Drive-to-Deliver Campaign in Response to COVID-19 ~ Thursday, April 9th ongoing

Volunteer driver Dan Penrose with car loaded to make doorstep deliveries of nutritional supplements, incontinence items and Zarky's grocery bags for clients.

#### 4. 6th Annual \*VIRTUAL\* CARE Walk ~ Saturday, May 23rd, 2020 from Anywhere

Top Individual Fundraiser, Emma McMahon, raised \$3,120. Over \$60,000 (net) total was raised.

#### 5. Third Party Fundraiser, Villages of Glancaster Door-to-Door Campaign ~ June 2020

With a bit of creativity and ambition, resident volunteers adapted their annual campaign and raised over \$10,000 – one of the most successful in the campaign's history!

### HIGHLIGHTS

#### 6. 42nd Annual Golf Classic ~ Tuesday, September 15th, 2020 at Dundas Valley Golf and Curling Club

Presenting Sponsor, Jim Johnston, driving the ball on a hole-in-one. Despite having to limit golfers and reformat the event, over \$28,000 (net) was raised.

#### 7. City of Hamilton Senior of the Year Awards Celebration ~ Tuesday, September 22nd, 2020

Honouring long-time volunteers and winners: the late Dave Davey, winner of the Behind the Scenes award and Lee McKay, winner of the Mary Smithson Companion & Compassion award.

#### 8. Donation of dozens of hand-made head coverings ~ Thursday, October 8th, 2020

Halina Mrowka with Executive Director Debbie Logel Butler presenting a surprise donation of a variety of hand-made head coverings to be distributed to clients.

#### 9. Zarcone Family Community Room Plaque Unveiling ~ Wednesday, October 14th, 2020

Tony and Jerry Zarcone celebrate the naming of the Community Room. Their generous pledged gift will help to support our clients for years to come.

#### 10. There's No Place Like Home Virtual Gala ~ Thursday, November 12th, 2020

CAP Staff member Dusty Vacon loading Board Member Don Burroughs car with his VIP Experience Bundle before the live online event. Not only were the bundles a hit, but this first-time virtual event raised over \$100,000 (net)!



# HELP WHEN YOU REALLY NEED IT



**Help when you really need it.** That's our mission, but how in such a time of crisis could we continue to meet this mandate? We could and we did because you did not stop giving. Like all Canadians our donors stepped up and continued supporting us.

In a report published by KCI entitled *The Big Rethink: Fundraising in Era of COVID-19*, it was noted that Canadian donors' interests have shifted during the pandemic to supporting basic needs and helping charities recover. Donors are now more than ever focused on their local community with a willingness to listen to how the pandemic is affecting the charity's ability to stay true to their mission. As the donor is listening, they are looking through a values lens and are motivated by the values being exhibited by the charity as they traverse to uncharted territory.<sup>1</sup> It has been our experience during the pandemic that our community has responded in this way. Our donors have supported us as we pivoted to continue supporting cancer patients with free services –

services that were in greater demand because of the higher risk of severe consequences from contracting the virus that cancer patients had to deal with daily.

KCI's follow-up report *Now What?* shared some interesting observations about giving during the pandemic. One was the movement back to basics with a focus on mission.<sup>2</sup> With forced social isolation, we couldn't meet and tour our donors, nor could we host our events as we have in the past. But we kept in touch. We called, we wrote, and we used the media to share what we were doing to support cancer patients with practical and free services; and our donors responded.



“ Recognizing that cancer patients are among the most vulnerable in our community, and that for those with little or no support networks, CAP's Drive-to-Deliver service was a way to reduce some burden in their lives, our family was quick to lend a hand to launch this new initiative. ”

Ray Hutton, CAP Donor, Hutton Family Fund

For a while now, KCI has encouraged charities to grow their digital capacity. But with limited donor dollars, that operational investment was secondary to client services. The pandemic changed that; it forced a digital transformation overnight. We were no different. We had to learn how to host Zoom meetings with each other and our donors, how to hold a virtual walk and gala, and engage our community to support us with events done physically apart but socially together.

“ We are continually blown away by how everyone in the community came together to support the needs of the people CAP provides services to and those services haven’t dwindled during the pandemic. We want to do more... as best we can... so tonight we are asking everyone to join us. We are looking for your support and generosity, for as far as we can tell, the effect on cancer patients and their families is tremendous. ”

Steve Strba and Cathy Yantsis  
CAP Virtual Gala Matching Gift Donors

In the world of philanthropy, there are the large and there are the small charities. So often in the past, it has been the large with big media budgets that have seen the growth, while the smaller charities have struggled. Again, the pandemic has changed that. The thinking by those who study this sector is that, “In this moment of global change and reflection, I’m not sure it’s going to be so much a question of ‘big’ and ‘small’ but rather one of ‘proactive’ and ‘reactive!’.”<sup>3</sup> We are proud to say that we were proactive and launched new programs and new ways of supporting cancer patients. We became more relevant and compelling in a time of great crisis.



“ I just deeply appreciate CAP, everyone has been so awesome to me, whether it’s the volunteer drivers taking me to my appointments or the Drive-to-Deliver program bringing me Ensure and the Zarky’s grocery bag full of prepared meals and fresh fruit and bread. Cancer can be so overwhelming and CAP has made a huge difference for me and so many other people as well. I recently made a donation just as a small way to say thank you for all your help and support. ”

Hollis M, CAP Client

This was possible thanks to donors who stepped up without hesitation to make a difference in the lives of cancer patients and their families in our community.

To quote Robert Kennedy, “The future is not a gift... It is an achievement.” Our future is neither a gift nor is it a given, but we do know that cancer is not going away. We are in a profoundly changed world made different by a pandemic we can’t control. Like cancer patients, we don’t know what tomorrow will bring,

but we do know that each and every day we will continue our mission of providing help when cancer patients really need it. It is our hope that as we do, you will stay committed with us. With no sustainable government funding, your donations are essential to ensuring that we continue to meet the very sad reality that free practical and tangible services for cancer patients in our community are needed now more than ever.

<sup>1</sup> <https://kciphilanthropy.com/the-big-rethink/>

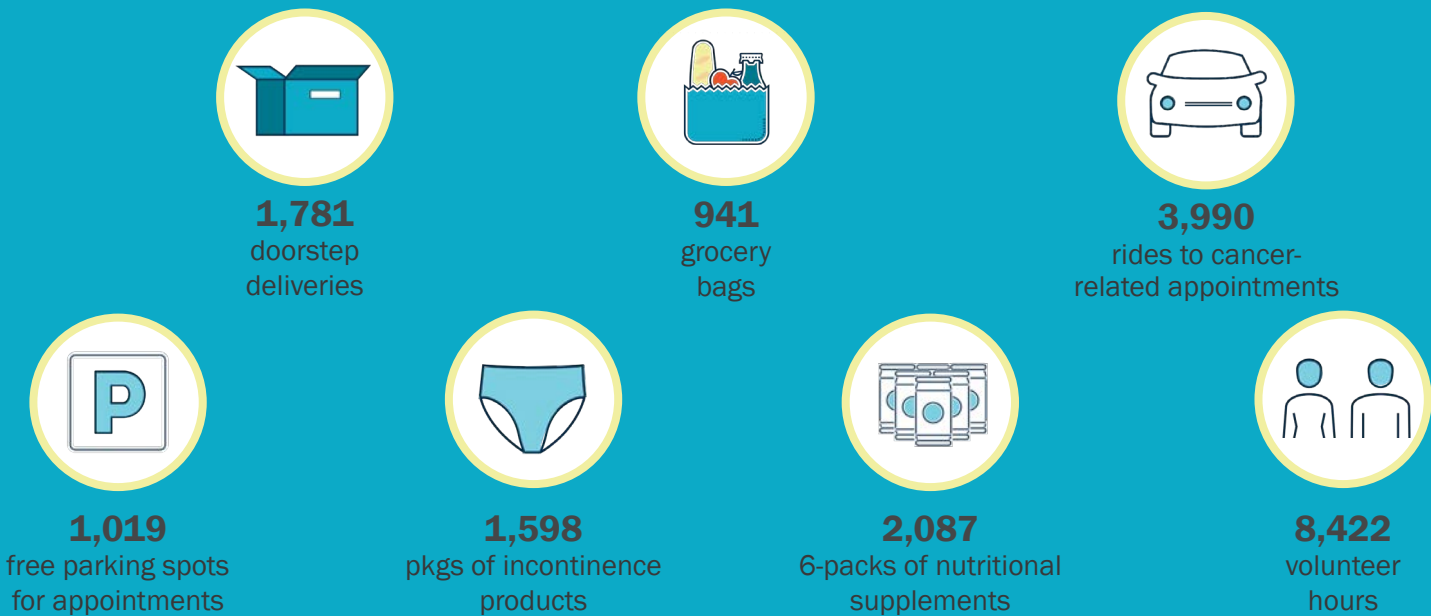
<sup>2</sup> <https://kciphilanthropy.com/now-what/>

<sup>3</sup> *ibid*

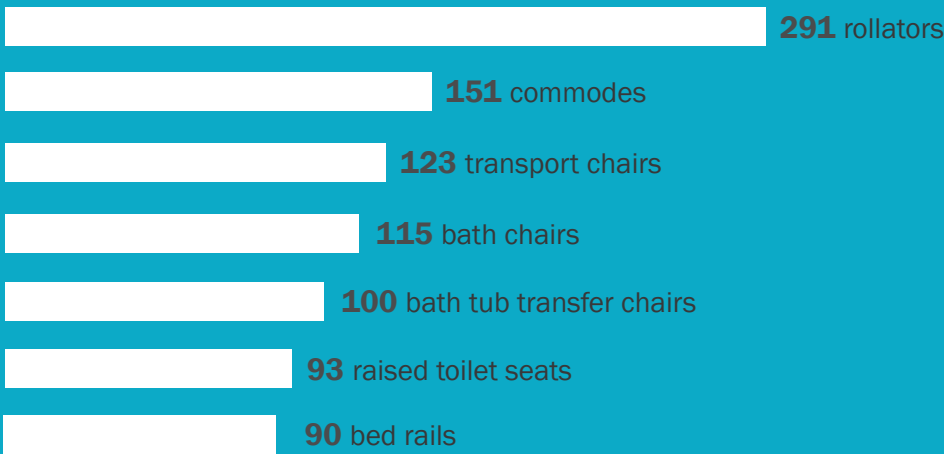
# SERVICES & IMPACT

## \$486K

2020 ANNUAL TOTAL SAVINGS TO PATIENTS IN OUR COMMUNITY



### TOP EQUIPMENT ITEM LOANS

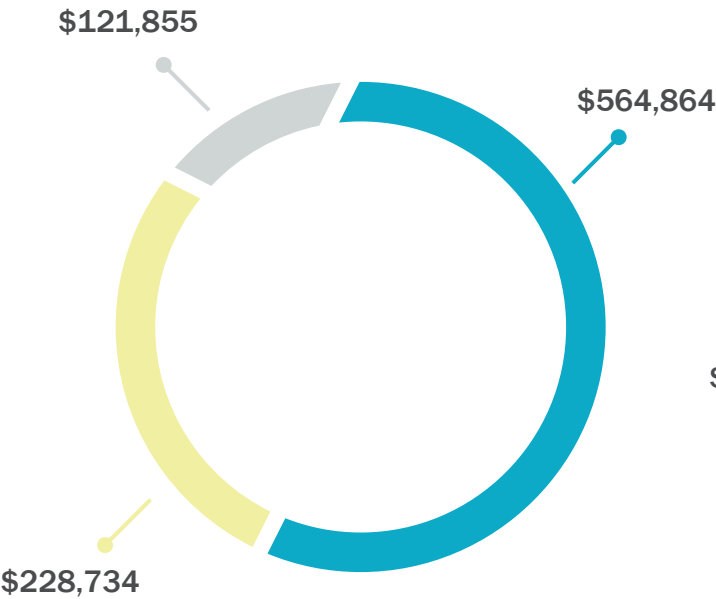


## 1,734

Total Equipment Pieces Loaned Out

# FINANCIALS

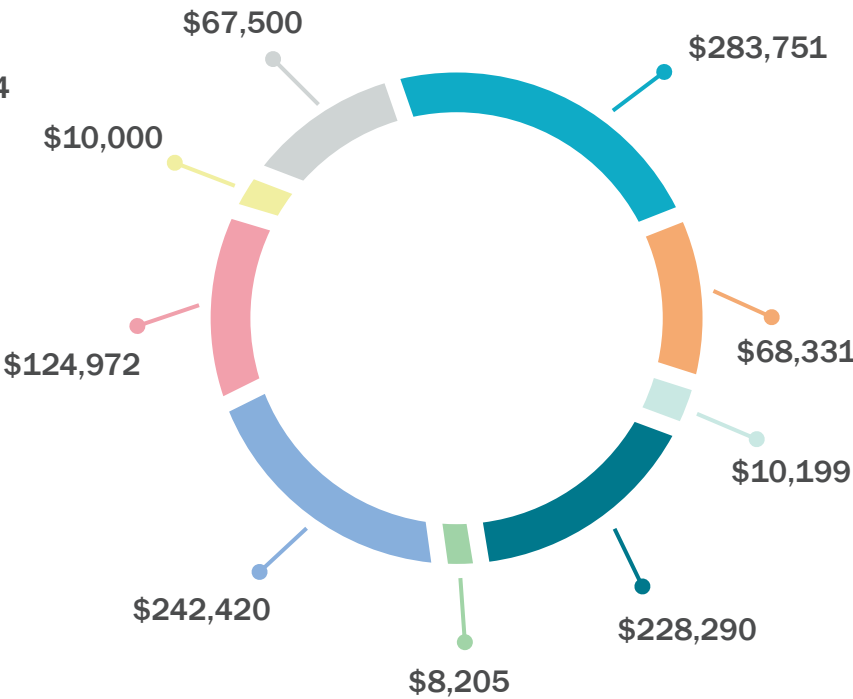
## 2020 EXPENSES



- Charitable Activities (62%)
- Management & Administration (13%)
- Fund Development (25%)

TOTAL EXPENSES: \$915,453

## 2020 REVENUE



- Special Events
- Major Gifts
- Legacies & Bequests
- Interest
- Grants
- Donations - Drive & Ride
- Donations - Undesignated
- Gifts-In-Kind
- Donations - In Memoriam

TOTAL REVENUE: \$1,043,668



# THANK YOU DONORS

We’re incredibly grateful for your support!

Donations \$300+ made by donors and friends who supported CAP’s services between Jan. 1 - Dec. 31, 2020:

- |   |  |   |                                       |
|---|--|---|---------------------------------------|
| ● 2020 Golf Committee Members                 | ● Benjamin Nnoli                               | ● Catherine Ridout  | ● Copetown Woods Golf Club            |
| ● A. DeSantis Developments                    | ● Beth Snyder                                  | ● Cathy Mous  | ● Cornelia Groep                      |
| ● Aaron Hart                                  | ● Beverley Corsini                             | ● Cathy Sheppard  | ● Crown Point Wood Co.                |
| ● Abbott Laboratories Co.                     | ● Beverly Golf & Country Club                  | ● Cecelia Carter-Smith  | ● Cynthia Abrahamian                  |
| ● Ad Plus Promotions                          | ● Bill and Dorothy Pelletier                   | ● Charlene and Steve Hawkins  | ● Daiva O'Neill                       |
| ● Aldershot Landscape Contractors             | ● Bill and Jane Evans                          | ● Charles and Florence Martin Foundation  | ● Dale McDonald                       |
| ● Alex Lolua of EPSCA                         | ● Bill Dermody                                 | ● Charles Kirk  | ● Dan and Janis Lankester             |
| ● Alison Willis                               | ● Binbrook Little Theatre                      | ● Charles McLeod  | ● Dan Begin                           |
| ● Allard Gunnink                              | ● Binh Khong Medicine Professional Corporation | ● Charles W. Boxall   | ● Dan Chameroy and Christine Donato   |
| ● Ancaster Film Fest                          | ● Blackheath Binbrook Lions Club               | ● Charles Zizzo   | ● Dan Penrose                         |
| ● Ange & Denise Restivo and Family            | ● Blanche Lynn Schofield                       | ● Cheryl Burns  | ● Daniel Burroughs                    |
| ● Angela Lee Mathieson                        | ● Bob Morreale                                 | ● CHML Children's Fund  | ● Dave and Deb Magier                 |
| ● Angela Morgan                               | ● Bob Savage                                   | ● Chris Cashin  | ● Dave Butler and Debbie Logel Butler |
| ● Anna Theofilaktidis                         | ● Bob Siegel                                   | ● Chris Matthews  | ● Dave Kay                            |
| ● Anne Guthrie                                | ● Boehringer Ingelheim                         | ● Chris Pirie   | ● David Ionico                        |
| ● Anonymous                                   | ● Brenda Hutton                                | ● Christina M. Davino   | ● David Johnson                       |
| ● Anselmo Guevarra                            | ● Brent Stevenson                              | ● Christine and Douglas Walker  | ● David Warner                        |
| ● Anthony and Cheryl Brands                   | ● Brian Shantz                                 | ● Chuggy's Tap & Grill  | ● Dawson's Hot Sauce                  |
| ● Anthony and Laura D'Alessandro              | ● Brownlow Partners                            | ● CIBC Wood Gundy   | ● Dean Billings                       |
| ● Arlene Connor                               | ● Bruno Uggenti                                | ● City of Hamilton Housing Services Division, Healthy and Safe Communities Department | ● Deborah Urbanowicz                  |
| ● Ashlee Leggett                              | ● C. J. Mulholland                             |   | ● Denise Konig                        |
| ● Astrid Beaver                               | ● Chesterfield & Mattress Factory Ltd.         |   | ● Diane Sargent                       |
| ● Baldasaro Contracting                       | ● C. Tom Kouroukis                             |   | ● Dianne Vienneau                     |
| ● Balraj Aujla                                | ● Cardi Construction                           |   | ● Dignity Memorial                    |
| ● Barbara Strang                              | ● Carol Anne Roth                              |   | ● Dimitri Eleusiniotis                |
| ● Bay Gardens Funeral Home & Bayview Cemetery | ● Carol Diane Sekleski                         |   | ● Dino and Julie Perri                |
| ● Becky McMahon                               | ● Carolyn Spearing                             |   | ● Domino's Pizza (Upper Gage Ave.)    |
| ● Bell Media                                  | ● Carolyn W. Gray                              |   | ● Don Burroughs                       |
| ● Benemar Homes                               | ● Carriage Gate Homes                          |   | ● Donna and Doug Johnson              |
|   | ● Carrie Salemi                                |   | ● Donna Dixon                         |
|   | ● Catherine Leckey                             |   | ● Doreen Morita                       |
|   |  |   |                                       |

# THANK YOU DONORS

We’re incredibly grateful for your support!

- |  |  |   |                                   |
|--|--|---|-----------------------------------|
| ● Doug Timmins   | ● FirstOntario Credit Union (Lime Ridge Mall branch) | ● Hamilton Police Service Project Concern                   | ● Janice Shearer                  |
| ● Douglas Leggat   | ● FirstOntario Credit Union (North Oakville branch)  | ● Hamilton Professional Fire Fighters Association Local 288 | ● Janis A. Thatcher               |
| ● Dr. Darlene Ozimok                                       | ● FirstOntario Credit Union (Oakville branch)        | ● Hamilton Tiger-Cats Football Club & Forge FC              | ● Janis E. Kay                    |
| ● Dr. Tony Anziano   | ● Foundation for Human Development                   | ● Hans Rerup  | ● Jay McQueen                     |
| ● Dundas Valley Golf and Curling Club                      | ● Francesca V. Lobo                                  | ● Harry Mulvale   | ● Jayde, Jon and Jordyn Winter    |
| ● Durisol International Corp.                              | ● Frank Banko  | ● Hasty Market  | ● Jean-Anne McQuarrie             |
| ● Dusty Vacon  | ● Fred and Diane Cranston                            | ● Heartland Farm Mutual                                     | ● Jeff Dolan                      |
| ● Dutchman Florist   | ● Fred Schulz  | ● Helaine Guther-James                                      | ● Jeff Naylor                     |
| ● Earl Anderson  | ● G. Walker Real Estate                              | ● Hess Millwork   | ● Jerry and Diane Ramsbottom      |
| ● Edward and Beverley Godwaldt                             | ● Gary Magwood                                       | ● Home Hardware (Fennell Ave. E)                            | ● Jerry Fudge                     |
| ● Edward Jones   | ● Genuine Bakery                                     | ● Iain Souter   | ● Jessica Rose                    |
| ● Eileen Suffoletta  | ● Geoff and Joan Walker                              | ● Ian Richards  | ● Jill Murray                     |
| ● Eleanor McClure  | ● Gerald Keith                                       | ● Industrial Alliance Financial Group                       | ● Jim and Sheila Drury            |
| ● Elizabeth Bowker   | ● GFL Infrastructure Group Inc.                      | ● Inissina Marchesano                                       | ● Jim Barton                      |
| ● Elizabeth Eldridge                                       | ● Giant Tiger (Upper Ottawa)                         | ● Investors Group Financial Services Inc.                   | ● Jim C Burroughs                 |
| ● Equal Parts Hospitality                                  | ● Gilda Marchesano                                   | ● Irene Strum   | ● Jim Hooker                      |
| ● Estate of Christina Joyce Garrett                        | ● Glenda Lenters                                     | ● Ivy Dsa   | ● JMorris Media                   |
| ● Felice Rocci   | ● Glenn Mannella                                     | ● Jackie Ashbaugh   | ● Joanne Battaglia                |
| ● Ferrell Builders' Supply                                 | ● Gordon Humphries                                   | ● James and Audrey MacDonald                                | ● Joanne Smith                    |
| ● FirstOntario Credit Union (Ancaster branch)              | ● Grace Silvestrin                                   | ● James Hooker  | ● Joe Aiello and Ann McLaughlin   |
| ● FirstOntario Credit Union (Brant Street branch)          | ● Grace United Church                                | ● Janco Steel Ltd.  | ● Joe and Terry Lee Bocchinfuso   |
| ● FirstOntario Credit Union (Dundurn branch)               | ● Greenhorizons Sod Farms                            | ● Jane Allison  | ● Joe Casale                      |
| ● FirstOntario Credit Union (Rymal Road branch)            | ● Greentario   | ● Jane and Michael Schwenger                                | ● John and Eileen Hutton          |
| ● FirstOntario Credit Union (South Hamilton Square branch) | ● Greg and Karen Rutledge                            | ● Jane Anderson   | ● John and Linda Boyer            |
| ● FirstOntario Credit Union (Upper Sherman branch)         | ● Guido Di Cesare                                    | ● Jane Reilly   | ● John Buckley                    |
|  | ● Hamilton Bulldogs Foundation                       | ● Jane S. Campbell  | ● John Burroughs                  |
|  | ● Hamilton Philharmonic Orchestra                    | ● Janice M. Underdown                                       | ● John G. Sagodi                  |
|  |  |   | ● John Harvey Investments Limited |
|  |  |   | ● Johnston Chrysler               |
|  |  |   | ● Jordan Curtis                   |
|  |  |   | ● Joseph and Elham Farah          |



# THANK YOU DONORS

We’re incredibly grateful for your support!

- Joseph and Valerie Walsh
  - Josie Boetto
  - Joyce McMurray
  - Judith Barrett
  - Judy MacKay
  - Judy Needham
  - Juliet Daniel
  - Karen Johnston
  - Karla I Widgren
  - Katharine Clayton
  - Kathie and Gerry Ward
  - Kathy Allan-Fleet
  - Katie Wallingham
  - Ken and Carol Theal
  - Ken and Maureen Gilmour
  - Ken Francey
  - Kenneth Thompson
  - Kerry Strabac
  - Kim M. Giovinazzo
  - Kim Sardella
  - Kimberly Calderbank
  - Krista Kay
  - Kristina and Wesley Mawson
  - Krysta Boyer
  - L. J. Barton Mechanical Inc.
  - Labourers' International Union of North America
  - Lamont Law
  - Larry Pitz
  - Laura Mitchell-Collier
  - Lawrence Bennet
  - Lawson Eng
  - Lee McKay
  - Leigh Wood
- Len and Marguerite Varrasso
  - Les and Bev Lasky
  - Lesley J Buck
  - Levona Hinchey
  - Linda Borger
  - Linda Tallman
  - Linseed's Boutique
  - Lisa and Jeff Owens
  - Lisa Narduzzi
  - Lise Gould Esthetics
  - LiUNA Local 837
  - Lori Bentley
  - Lori Dillon
  - Lorraine Ashthorpe
  - Lorraine Finch
  - Lou and Sylvia Cino
  - Lou Eves
  - Lucilla and Robert D'Alesio
  - Luisa Filice
  - Luke Anderson
  - Lulu's Savoury Boards and Gifts
  - M.A. Clark & Sons Funeral Home
  - Mabels Labels
  - MacKenzie Investments
  - Malcolm and Nellie Hawkins
  - Maple Tree Farm
  - Marchetti Lee Family Law
  - Margaret Dalle Vedove
  - Margaret Simon
  - Maria Rowley
  - Marianne Hind
  - Marie Cassiani
- Marilyn Pearson
  - Mark and Bonnie Pataran
  - Mark Burroughs
  - Mark Maguire
  - Markey-Dermody Funeral Home
  - Mary and Craig Cook
  - Mary Jackman
  - Mary-Lynn McIlveen
  - Marz Homes
  - Mathew Moore
  - Matt McPeak
  - Maureen W. Barnes
  - McHugh Whitmore LLP
  - McQueen Voiceovers
  - Medical Image Wigs
  - Megalomaniac Winery
  - Michael and Emily Ecker
  - Michael Gilmour
  - Michael Souter
  - Michael Stevens
  - Michael Way
  - Michele English
  - Michelle Curtis
  - Mike and Helen Kustra
  - Mike Fortier
  - Mike McNally
  - Miller Shoes
  - Molinaro Group
  - MontHill Golf and Country Club
  - Morgenstern's
  - Morison Insurance
  - Multi-Area Development Inc.
  - Nancy Calder
- Nancy Kovacs
  - Narciso Bomben
  - Natasha Leighl
  - National Tire Distributors
  - Nespresso Canada
  - Neven Vujic
  - New Horizon Development Group
  - Nicole Hayes
  - Nothing Bundt Cakes (Burlington)
  - Office of the Mayor - Fred Eisenberger
  - Operatic Agency Inc.
  - Orest Ostapiak
  - Pam and Mike Lamontagne
  - Pamela Benoit
  - Papa's Pens
  - Pat Butera
  - Paul and Marilyn Heimpel
  - Paul Anderson
  - Paul Billone
  - Paul Holmes
  - Paul Morrison
  - Paula Furii
  - Percy Brown
  - Peter Abi-Rashed
  - Peter and Claire Kislinsky
  - Peter and Ester Santos
  - Peter and Gail Britton
  - Peter and Reesa Spitman
  - Peter Eulette
  - Peter Gauthier
  - Peter Luvisa
  - Peter Mamer

# THANK YOU DONORS

We’re incredibly grateful for your support!

- Peter Spitman Painting
  - Philip Acciaroli
  - Picard's Peanuts
  - PX Dermody Funeral Home
  - Rae Adamson
  - Ray and Caroline Hutton
  - RBC Golf
  - Rhonda Hofman
  - Richard Hosking
  - Rick Marshall
  - Robert Ebert
  - Robert J De Benedictis
  - Robert Nesbitt
  - Robertson Electric Wholesale Ltd
  - Robin Magill
  - Roma Bakery
  - Romy and Hedy Anastasio
  - Ron and Irene Buffam
  - Ron Hudspith
  - RONA Inc.
  - Rose Delottinville
  - Rosemarie Chambers
  - Ross Roach
  - Rotary Club of Hamilton A.M.
  - Rothsay, A Division of Darling International Canada Inc.
  - Roy Bauman
  - Royal Canadian Legion Branch 163
  - Royal LePage State Realty
  - RS Accounting and Tax Services
  - Ruchi Kumar Tyagi
- Russell Morreale
  - Rustic & Reclaimed
  - Ruth Readyhough
  - Ryan Coughlin
  - Sandy Schweyer
  - Sarah Bernhardt
  - Sarita Sharma
  - Satellite Garden Depot
  - Sean Burroughs
  - Sergio Cacoilo
  - Sexton in the City
  - Shailendra Sharma
  - Shaun Snow
  - Sheila Verlaan
  - Sheila Walsh
  - Shirley MacKinnon
  - Shirley Mitchell
  - Shoppers Drug Mart Life Foundation
  - Somya Gupta
  - Soosie Stuart
  - Soundbox Productions
  - St. John Henry Newman Catholic Secondary School
  - St. Luke Catholic Elementary School
  - St. Thomas More Catholic Secondary School
  - Stan and Elizabeth Tick
  - Stella MacLean
  - Stephanie Pecora
  - Steve and Carol Pacey
  - Steve Rowley
  - Steve Strba and Cathy Yantsis
  - Steve Strba Consulting
- Stoney Creek Paving
  - Strauss Men's Wear (CF Lime Ridge)
  - Studio 12 Dance Company
  - Sue McIlveen
  - Susan Robinson
  - Susan Skinner
  - System Lifeline Inc.
  - T. Johns Consulting Group
  - T. Lloyd Electric Ontario Ltd.
  - Terri Schnurr
  - The Auctionista
  - The Benevity Community Impact Fund
  - The Designers Printing Inc.
  - The Hutton Family Fund
  - The Lions Club of Rockton
  - The Malloch Foundation Fund
  - The Martin Foundation Fund
  - The Millionaire's Daughter
  - The Pandemic Response Fund
  - The Platter Company
  - The Schwenger Family Foundation
  - Theresa Benincasa
  - Thomas A. Hickey
  - Tim Dickins
  - Timea Sarkozi
  - Timothy Lee
  - Tina Molinaro
  - Tobi Hawthorne
  - Today's Housewares
- Tom Neelin
  - Tony Zarcone
  - Turner Family Funeral Home
  - Tuscan Lodge 551 Hamilton
  - United Way Greater Toronto & Region
  - United Way Halton & Hamilton
  - United Way Niagara
  - Victoria and Ralph Weekes
  - Vincenza Travale
  - Walk Off The Earth
  - Waqas Rana
  - Wes Connor
  - Westpark Homes
  - Williams Distinctive Gems
  - Yvonne van Dijk
  - Zaki Ullah
  - Zarky's Fine Foods
  - Zoetic Company
  - Zonta Club of Hamilton 1





555 Concession Street  
Hamilton, ON L8V 1A8  
[www.cancerassist.ca](http://www.cancerassist.ca)  
905-383-9797

Charitable Registration # 14026 2759 RR0001

